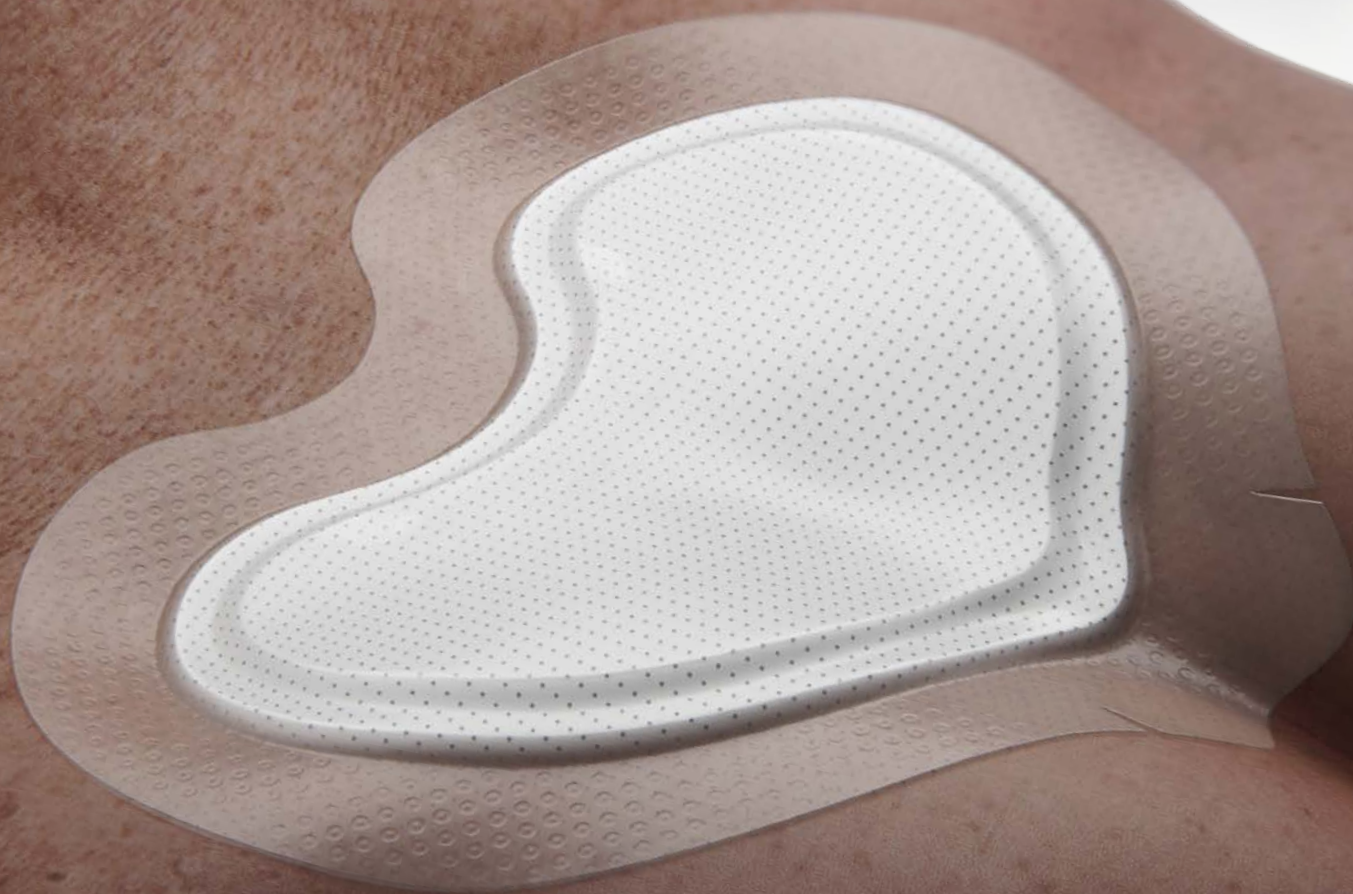


Introducing Biatain[®] Silicone Fit

Fit to the **body**. Fit to the **wound**.



Fit to the **body**

It can be difficult to keep foam dressings in place due to body folds, creases, and patient movement.

Biatain® Silicone Fit is **gentle for patient comfort**. It is easy to use as part of your pressure injury prevention protocol. It can be applied, lifted and reapplied at least 5 times over 3 days.



Can be applied, lifted and reapplied at least **5x over 3 days**



Advanced five-layer construction supports adhesion through a carefully designed silicone perforation pattern.

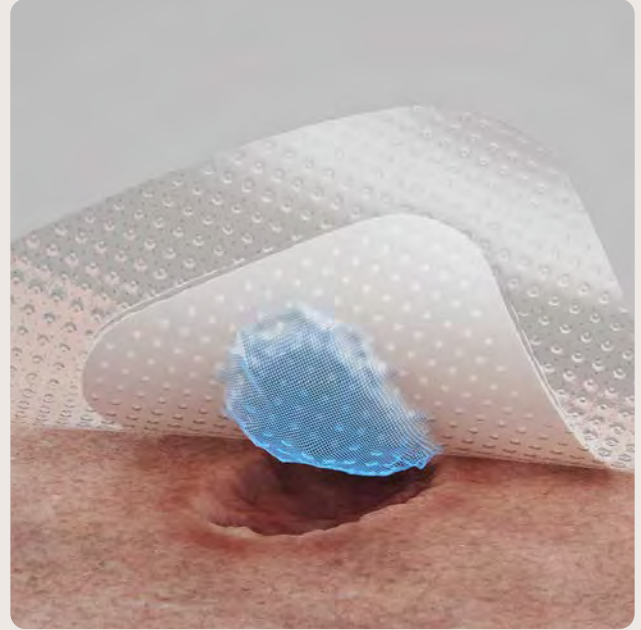
Optimized border design minimizes rolling edges during application and reapplication.

Twin tips and slits support flexibility and help the dressing stay in place.

Fit to the wound

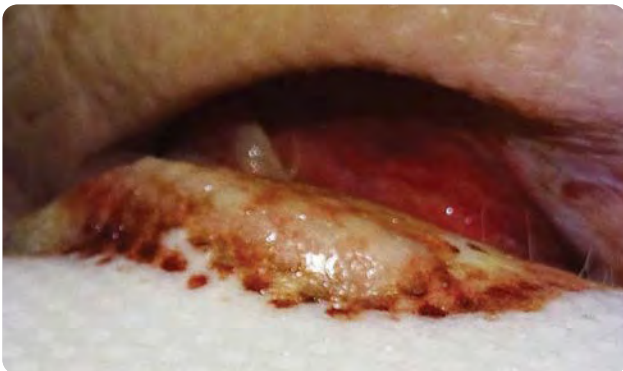
Silicone foam dressings that leave dead space between the wound bed and dressing allow for exudate to pool. This creates an environment for bacteria that leads to a risk of infection.

Biatain Silicone Fit **matches the shape and depth of the wound bed** up to 2 cm, leaving minimal dead space where exudate can pool or leak. It creates a close fit that lowers the risk of infection and maceration.

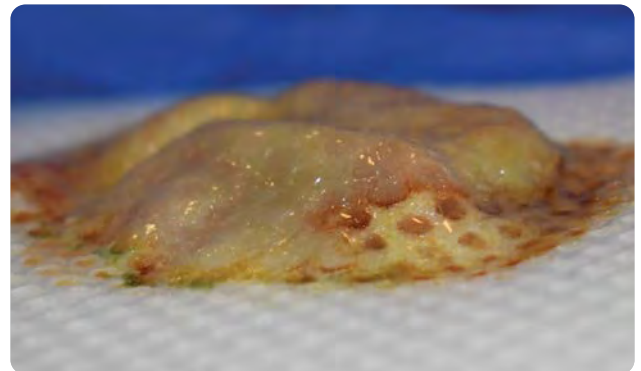


Matches the shape and depth of the wound bed up to 2 cm

Absorbs exudate vertically



Retains exudate



Find your fit from our full portfolio

Choose from 12 of our Biatain Silicone Fit foam dressings to suit your facility's needs. All sizes are developed and indicated for both pressure injury prevention and wound treatment.

Product code	Product description	Box size
37538	3 x 3" (7.5 x 7.5 cm)	10
37539	4 x 4" (10 x 10 cm)	10
37540	5 x 5" (12.5 x 12.5 cm)	10
37541	6 x 6" (15 x 15 cm)	5
37542	7 x 7" (17.5 x 17.5 cm)	5
37543	4 x 8" (10 x 20 cm)	5
37544	4 x 10" (10 x 25 cm)	5
37545	4 x 12" (10 x 30 cm)	5



Biatain Silicone Fit Sacral

Product code	Product description	Box size
37547	6 x 7.2" (15.2 x 18.4 cm)	5
37548	8.1 x 9.5" (20.6 x 24.2 cm)	5



Biatain Silicone Fit Multishape

Product code	Product description	Box size
37549	4.6 x 7" (11.8 x 17.8 cm)	5



Biatain Silicone Fit Heel

Product code	Product description	Box size
37546	7.2 x 6.6" (18.2 x 16.9 cm)	5



Coloplast offers a full range of foam dressings including:

- Biatain® Silicone Lite
- Biatain® Non-Adhesive
- Biatain® Adhesive
- Biatain® Silicone Non-Border
- Biatain® Silicone Ag
- Biatain® Ag Non-Adhesive
- Biatain® Ag Adhesive



Interested in learning more?

Information is available on topics including:

- In-vitro test results vs. other foams
- Clinical photos
- Product demonstration
- Working with Coloplast
- Educational opportunities

Contact your Coloplast sales representative or scan the QR code to visit biatainsiliconefit.coloplast.us.



Coloplast was founded on passion, ambition, and commitment. We were born from a nurse's wish to help her sister and the skills of an engineer. Guided by empathy, our mission is to make life easier for people with intimate healthcare needs. Over decades, we have helped millions of people live more independent lives and continue to do so through innovative products and services.

Globally, our business areas include Ostomy Care, Continence Care, Wound and Skin Care, Interventional Urology and Voice and Respiratory Care.

Refer to product labeling for complete instructions including product uses, ingredients, purpose, warnings, precautions and other information. The images are not drawn to scale and are for illustrative purposes only. May not be indicative of clinical performance. Performance and experience may vary.

[Ostomy Care](#) | [Continence Care](#) | [Wound and Skin Care](#) | [Interventional Urology](#) | [Voice and Respiratory Care](#)

Coloplast Corp. Minneapolis, MN 55411 / 1-800-533-0464 / www.coloplast.us

Coloplast and the Coloplast logo are trademarks of Coloplast A/S.
© 2023-12 Coloplast A/S. All rights reserved. PM-29872

